

industry

manufacturing / assembly / work stations



◀ Jumping for Joy

Zedlan™, now available in many product variations, has amazing durability. You'll find it in many of our anti-fatigue mats like **Comfort-King™** shown here. With 3 times more resilience than regular vinyl foam mats, it greatly reduces strain on feet, ankles, legs and lower back.

Wear-Bonded Comfort-King combines a softer layer for maximum resilience with a wear-tough surface.

FOR COMPLETE PRODUCT INFORMATION, SEE PAGES 48-50, 56 & 58-59



▶ Finishing/Assembly

By permanently fusing our patented Zedlan in two layers, we double its exceptional anti-fatigue characteristics. For positions that require long hours of standing, specify new **Wear-Bonded Comfort-King**.

BEST

**Wear-Bonded™
Comfort-King™**
(shown here & on p. 48)

ALSO RECOMMENDED
Comfort-King, p. 48
Wear-Bonded Tuff-Spun, p. 54





► **Finishing/Assembly**

Yes, you can combine anti-fatigue with drain-through, as **Safewalk-Light** does so well. See a full selection of anti-fatigue, drain-through mats on pages 60-63.

Safewalk-Light™
(shown here & on p. 63)



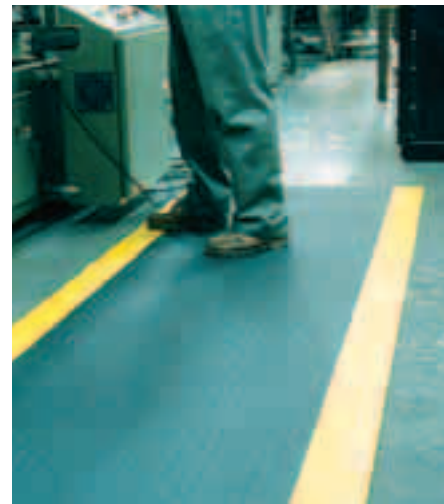
► **Machine Operation**

This PVC vinyl sponge has a durable rib or pebble surface and safety borders.

BEST

Tuff-Spun®
Safe-N-Easy™
(shown here & on p. 55)

ALSO RECOMMENDED
Industrial Deck Plate with
Safety-Aware Borders, p. 51



Air-Step, p. 56, is made of vulcanized rubber for tough industrial environments.

▲ **Machine Operation**

These hard-wearing ergonomic mats combine Zedlan™ with a deck plate vinyl surface. Available with varying foam thicknesses.

BEST

Workers-Delight™
with Zedlan™
(shown here & on p. 50)

ALSO RECOMMENDED
Workers-Delight Supreme, p. 50
Workers-Delight Ultra, p. 50
Industrial Deck Plate, p. 51
Safety-Step Perforated, p. 53

► **Work Stations**

Machine operators will thank you for heavy-duty relief in a mat that holds up to the rigorous environment of a manufacturing plant.

BEST

Wear-Bonded™
Tuff-Spun®
(shown here & on p. 54)

ALSO RECOMMENDED
Workers-Delight, p. 50
Cloud-10, p. 55





◀ Lathe Machinery

Identifying individual workstations is now easier with multi-colored borders and tiles. Slip-resistant, drain-through surface also makes work areas safer.

BEST

Safewalk™ with Colored Borders
(shown here & on p. 63)

ALSO RECOMMENDED
Cushion-Tile, p. 60



◀ Cutting Stations

Keep wet or oily work environments safe with these anti-fatigue, drain-through mats. Wide-open slots drain and dry quickly.

BEST

Safewalk™
(shown here & on p. 63)

ALSO RECOMMENDED
Dura-Lock, p. 61



◀ Metal Cutters

Where anti-fatigue matting is a must, but the work environment includes metal shards, choose a mat that sweeps clean easily.

BEST

Safety-Step™ Solid-Top
(shown here & on p. 53)

ALSO RECOMMENDED
Yoga-Flex, p. 53
Air-Step, p. 56

industry

metal working / welding / general industrial

◀ Process Control

Pain and fatigue reduce workers' concentration, accuracy and productivity. Attack them at the source with Crown's superior anti-fatigue mats.

BEST

Wear-Bonded™ Tuff-Spun®
(shown here & on p. 54)

ALSO RECOMMENDED
Comfort-King, p. 48
Wear-Bonded Comfort-King, p. 48

▶ Welding

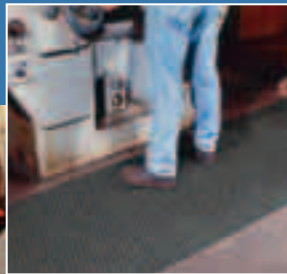
Even in harsh industrial environments, these mats stand up to sparks and hot metal shards, while providing essential anti-fatigue relief.

BEST

Nyra-Cord Counter Tred
(shown here & on p. 61)

ALSO RECOMMENDED
Spark-Safe, p. 57

Lion Mat, p. 61, for
drain-through anti-fatigue.



◀ Printing & Imaging Stations

Fight fatigue and its productivity-cutting effects with mats that are slip-resistant and easy to clean.

BEST

Cushion-Step®
(shown here & on p. 52)

ALSO RECOMMENDED
Comfort-King Supreme, p. 48
Industrial Deck Plate, p. 51

industry

safety / warehousing / shipping

► Shipping Docks

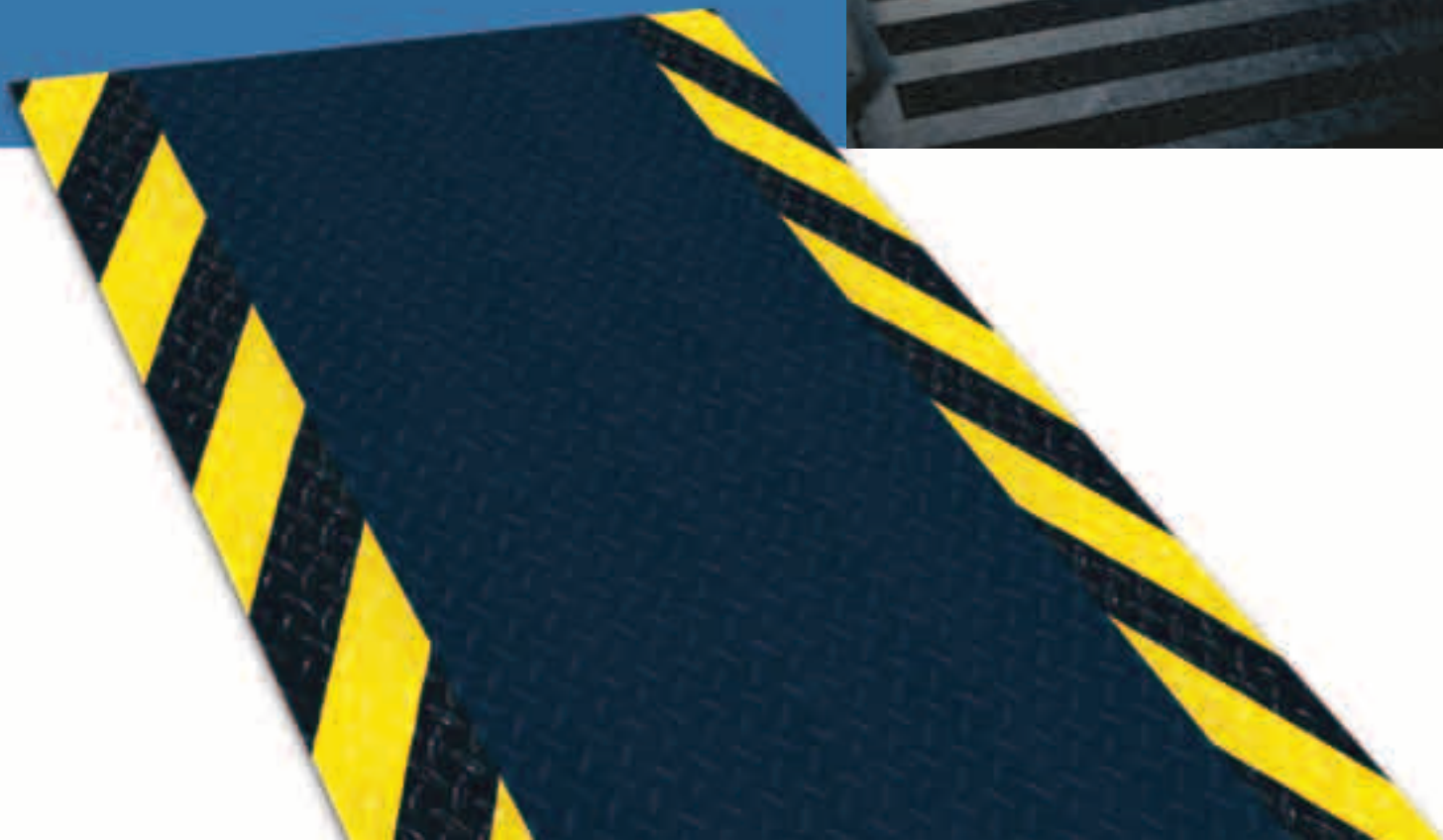
Minimize slips and falls when loading and unloading cargo with abrasive traction pads, which can be used on wet or dry ramps.

Anti-Slip Traction Pads
(shown here & on p. 57)

▼ Safety-Aware Border

Add this can't-miss-it border to Deck Plate anti-fatigue mats or runners.

Industrial Deck Plate with Safety-Aware™ Border
(shown here & on p. 51)





▲ Warehouses

Provide anti-slip and floor protection with economical, light-weight vinyl runners. Ideal for aisles, walkways and storage areas.

BEST

Pro-Tekt™ Runner
(shown here & on p. 68)

ALSO RECOMMENDED
Corec Runner, p. 67

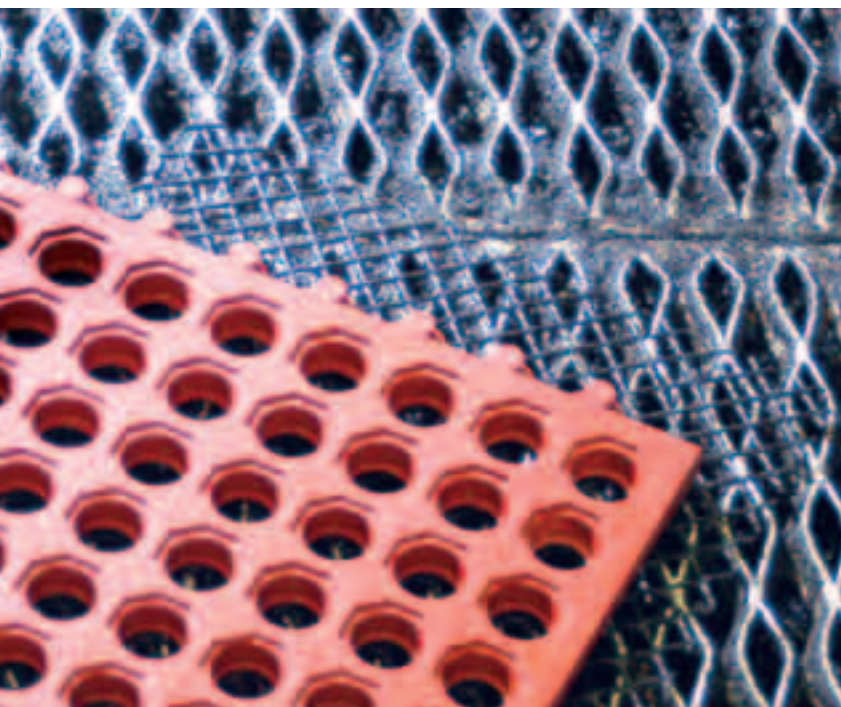


► Emergency Wash Stations

Available in OSHA-approved colors, these mats identify wash stations instantly. Waffle-grid tiles drain quickly.

Cushion-Tile™ Shower Station
(shown here & on p. 57)

Cushion-Tile™ Eyewash Station
(shown in inset & on p. 57)



◀ Metal Grating

Slippery metal grating definitely needs matting, but the grate can tear up a mat pretty quickly. Now you can add to the life of mats and runners by using Grating Mesh between the mat and the grate.

Grating Mesh
(shown here & on p. 71)

industry

clean rooms / utilities / static control areas / testing



◀ Electrically Sensitive Work Stations

To avoid damage from electrical surges and sparks, rely on one of our anti-static mats with anti-fatigue comfort.

BEST

Electrically Conductive Deck Plate
(shown here & on p. 59)

ALSO RECOMMENDED:
Comfort-King Anti-Static, p. 59

▼ Mainframes and Computer Areas

Our anti-static, carpet-top mat gives you the attractive look and feel of carpeting without the worries of static damaging your computer systems or electronic equipment.

Stat-Zap® Carpet Top
(shown here & on p. 59)



